



Bobcat[®]

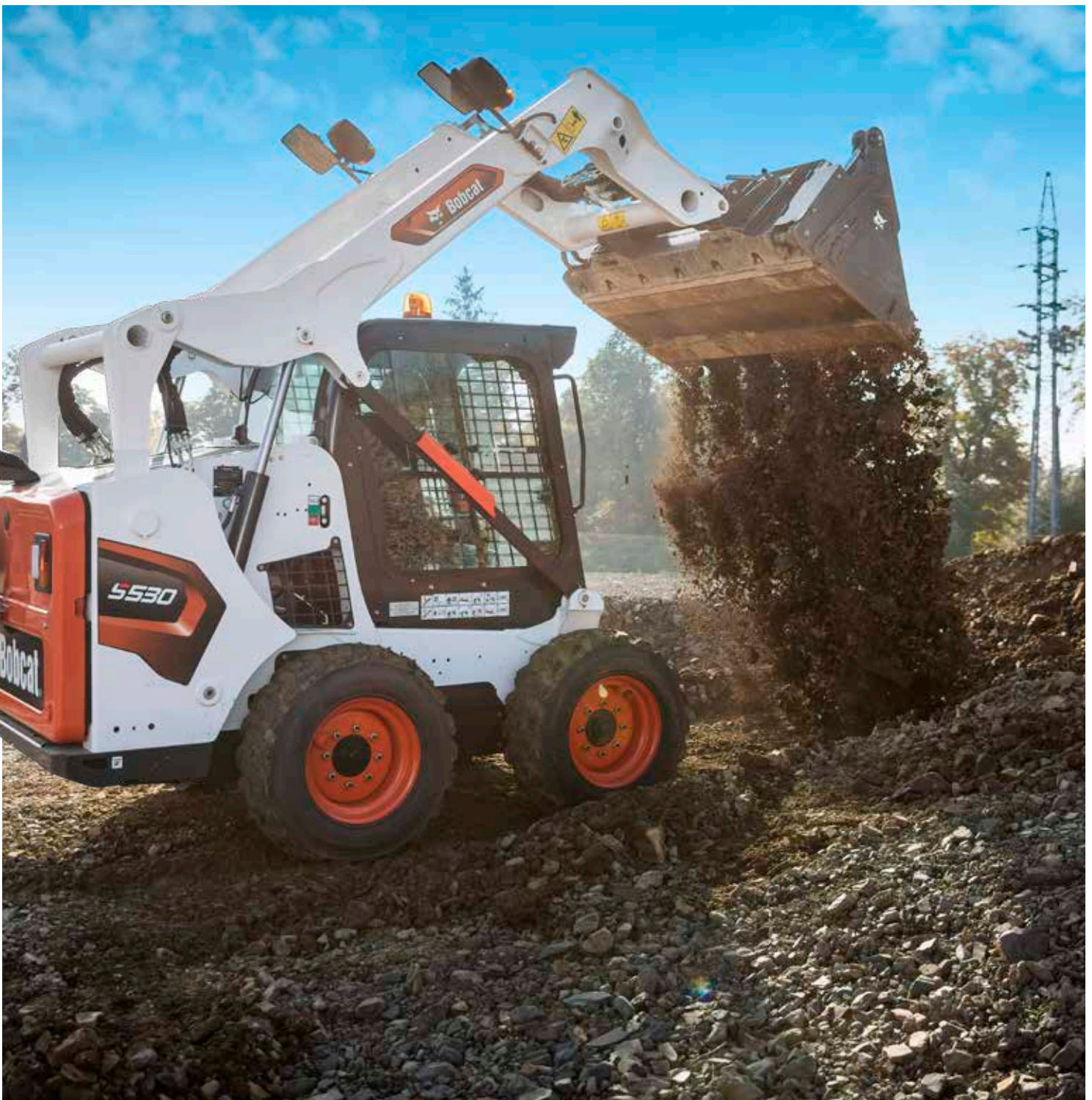
One Tough Animal.

SKID STEER LOADERS

S450 | S510 | S530 | S550 | S590

K-Series | M-Series | R-Series

🌐 Europe



INTRODUCTION

ONE TOUGH ANIMAL



▶ ABOUT BOBCAT

In 1958, Melroe Manufacturing Company introduced a compact front-end loader that evolved quickly into the M400, the world's first true skid steer loader. The company soon adopted what became the world-famous 'Bobcat' brand – and its success paved the way for the global compact equipment industry we know today.

▶ INNOVATION CENTER IN DOBŘÍŠ

New technologies and machines are rigorously tested to take on the toughest jobs.



▶ BOBCAT TODAY

With over 60 years of experience in manufacturing and continuously improving the world's most popular loaders, we've shipped over 1 million machines to the market. Our loaders are synonymous with high performance, reliability and unmatched comfort.



▶ OUR MISSION

We empower operators to accomplish more, while working in the toughest conditions and tightest situations. When our customers have the will, we provide the way.

BUILT AROUND THE OPERATOR

► SUPERIOR POWER IN A COMPACT PACKAGE

The Bobcat M-Series provide a best-in-class mix of performance and portability with future-proof Stage V engines, ensuring high levels of operator comfort, intuitive controls and maximum uptime thanks to their robust construction.



- LED sidelights
- Remote control ready
- Auto ride control
- Vertical and radial lift arm option **P.7**
- Durable tailgate
- Tire selection to fit all job sites
- Pressurized enclosed cab with heating and air conditioning
- ROPS/FOPS protection
- Selectable Joystick Controls
- High-flow option
- Hydraulic power Bob-Tach™ option

Over 100 attachments for any kind of job **P.16**

Bucket positioning



► COMPACT SIZE

Easy to transport and able to work even in the tightest spaces.



► UNMATCHED COMFORT

Pressurized cab to keep dust out, optional air conditioning and several seat options. **P.8**



► MAXIMUM UPTIME

A reliable, time-proven design and easy maintenance thanks to 60 years of innovation. **P.10**



► POWER AND EFFICIENCY

Easy operation and low fuel consumption thanks to high torque engines. **P.7**

PERFORMANCE



► **HIGH PERFORMANCE AT YOUR FINGERTIPS**
Thanks to advanced features such as high-flow for using a variety of attachments, auto ride control for increased comfort and less spillage, or reverse fan for work in dusty environments.

► **NEW STAGE V ENGINES**
Combining high power with compact size, the new Bobcat Stage V engines redefine expectations thanks to 37% higher torque at lower RPM, fast recovery from overload, less noise and low fuel consumption.



LIFT PATTERNS TO MATCH YOUR NEEDS

► **RADIAL**
A cost-effective option, ideal for ground-level attachments with basic lift capability for everyday jobs.



► **VERTICAL**
Higher lift, increased forward reach at maximum height, and greater lift capacity for demanding applications and environments.



STEP INSIDE



► PRESSURIZED CAB

Bobcat loaders come with a pressurized cab as standard, making sure that dust and dirt are kept out. With storage space and a 12V charger, this easy-to-clean cab is built to make tough jobs comfortable.



► IN ALL WEATHER CONDITIONS



Stay comfortable and focused on the job all year round with direct cab temperature control.

► DELUXE DASHBOARD

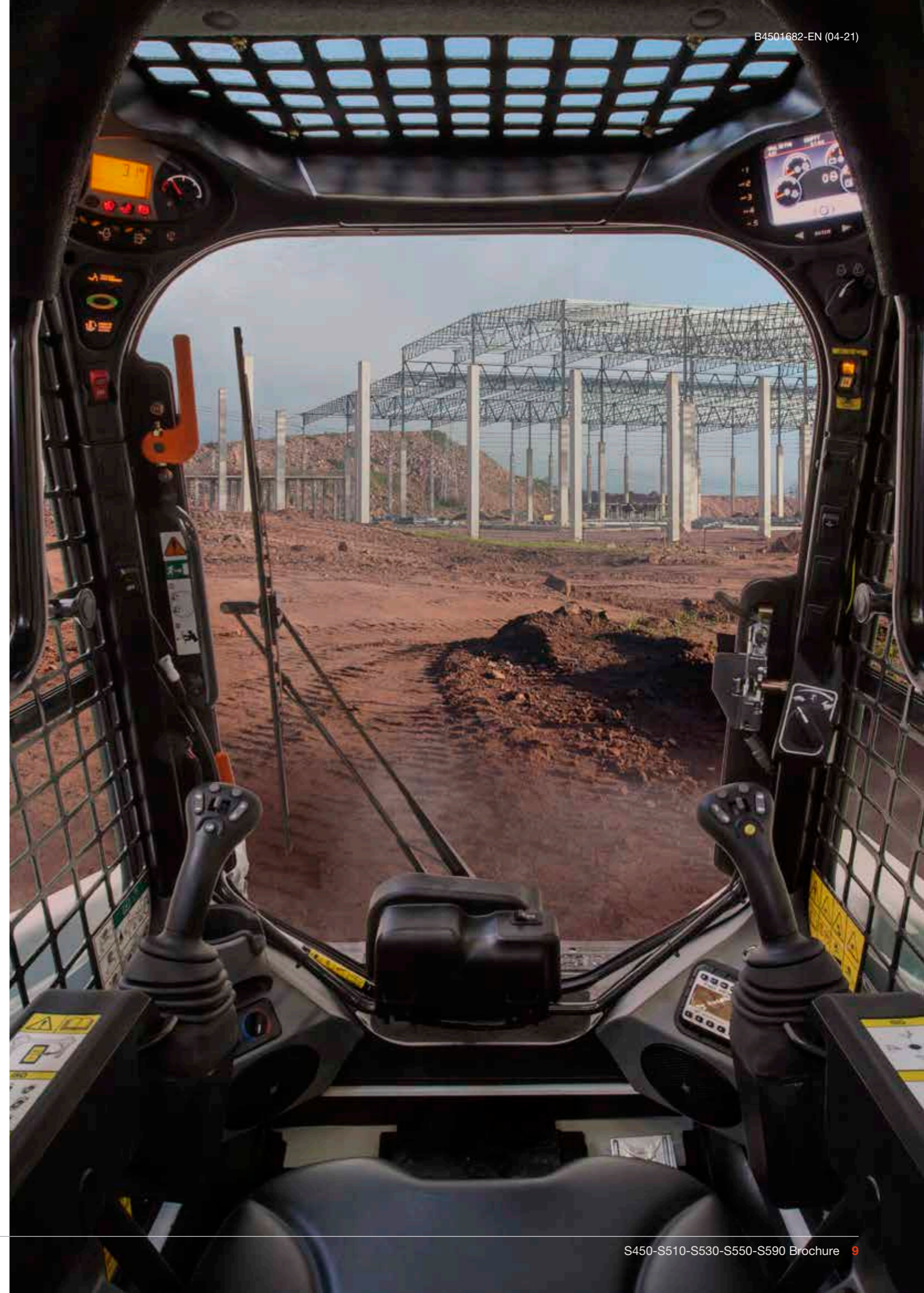


Intuitive control panel and keyless ignition as standard.

► PERFECT SEAT



Stay comfortable all day with ergonomic, easily adjustable seats with suspension options.



BUILT TO LAST

▶ IMPROVED UPTIME

Bobcat loaders rely on a range of features that help minimize maintenance and protect your machine: self-diagnostics, machine shutdown protection, battery run-down protection, cold weather protection and other features. What's more, M-Series skid steer loaders feature the industry's only maintenance-free chain case, which further reduces maintenance and gives you added peace of mind.

▶ EXTENDED SERVICE INTERVALS

Improve efficiency and reduce your operating costs thanks to extended service intervals. Bobcat recommends first service after 500 hours of operation – up to 10x the industry standard.



▶ MACHINE IQ

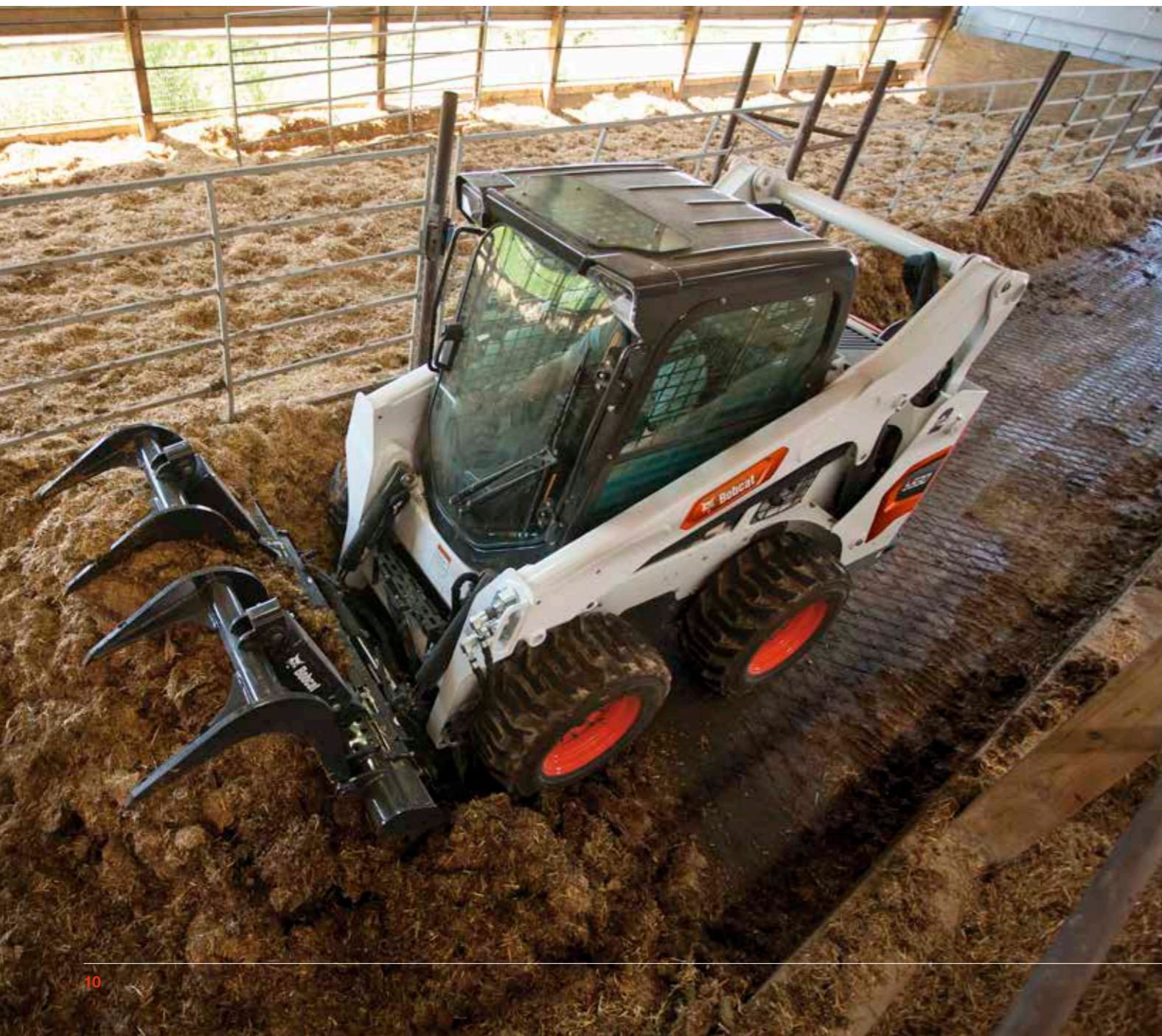
BOBCAT® Machine IQ Wireless Communications enhances the support for your Bobcat machine.

- Durable built-in monitoring electronics
- Data are available to our machine monitoring specialist
- Maintenance is optimized for your business
- Data-driven services maximize uptime

▶ STANDARD WARRANTY

Bobcat Company develops every machine to the highest standards of quality and durability. That's why our standard warranty provides 24 months or 2000 operating hours (whichever occurs first) of coverage.

THERE'S NO TIME FOR DOWNTIME. STAND UP TO THE HARSHTEST CONDITIONS. DAY AFTER DAY.



▶ PROTECTION PLUS EXTENDED WARRANTY

Get peace of mind with a Protection Plus® extended warranty. Providing the same level of protection as the standard warranty, Protection Plus also reflects different customer needs and expectations by offering a choice of durations and annual operating hours. According to your needs, you can benefit from the coverage for up to 5 years or 6000 engine hours. And Protection Plus is transferrable – so it will likely increase your machine's resale value.



▶ BOBCARE

A long-running machine starts with proper planned maintenance. And it helps protect against repair costs and unplanned failures when you're counting on your machine to work.

- Avoid risk by preventing major repairs and complete failures.
- Accomplish more by reducing downtime and increasing your productivity and profitability.





S450

► **COMPACT AND TRANSPORTABLE**
 The smallest loader with air conditioning on the market offers radial lift for versatility in any situation. With a tipping load of 1308 kg, the S450's compact frame at only 1488 mm wide and 1976 mm high belies its power.



S510

► **A VERSATILE EVERYDAY MACHINE**
 The S510 is a perfect fit for an everyday, multi-purpose loader thanks to its 1703 kg tipping point, while remaining compact in size and transportable at 1643 mm wide and 1972 mm tall. A high-flow option and radial lift further increase its flexibility.



S530

► **THE ALL-ROUNDER**
 With a powerful 55 hp engine, a tipping load of 1823 kg and a 3023 mm lift height, the S530 provides an optimum weight-to-power ratio to take most jobs head-on. The vertical lift and high-flow option mean that you always have the situation under control.

CHOOSE YOUR ANIMAL



S550

► **MAXIMUM PERFORMANCE AND RADIAL LIFT**
 The S550 M-Series loader is a highly advanced machine, presenting a serious step-up in performance and operator comfort. Thanks to a 68 hp engine, a tipping load of 1852 kg with radial lift, and many deluxe features as standard equipment - such as high-flow, 2-speed travel and selectable joystick controls - you have plenty of performance for even the most demanding jobs at your fingertips.



S590

► **MAXIMUM PERFORMANCE AND VERTICAL LIFT**
 The powerful S590 is a premium M-Series model, offering a range of comfort improvements and deluxe features as standard, such as high-flow, 2-speed travel and selectable joystick controls. Get even the toughest jobs done thanks to a 68 hp engine and a tipping load of 1958 kg with vertical lift.

STANDARD EQUIPMENT



Heavy-duty tires

FOR ALL MACHINES

- Automatically activated glow plugs
- Auxiliary hydraulics: variable flow/maximum flow
- Bob-Tach™ frame
- Bobcat Interlock Control System (BICS)
- CE certification
- Cushioned lift and tilt cylinders
- Deluxe instrument panel
- Deluxe operator cab
- Electrically activated proportional front auxiliary hydraulics
- Engine/hydraulics system shutdown
- Keyless start with password capability
- Lift arm support
- Machine IQ (telematics)
- Operating manual
- Noise reduction kit
- Operating lights, front and rear
- Parking brake
- Seat bar
- Seat belt
- Spark arrester
- Suspension seat

FOR S450

- 10 x 16.5, 10-ply, Heavy duty tires

FOR S510 & S530

- 10 x 16.5, 10-ply, Heavy duty tires
- Hydraulic bucket positioning (including ON/OFF switch)

FOR S550 & S590

- 10 x 16.5, 10-ply, Versatile duty tires
- 2 Speed
- 7-pin attachment control
- High-flow auxiliary hydraulics
- Hydraulic bucket positioning (including ON/OFF switch)
- Selectable Joystick Controls (SJC - R/C Ready)

*Roll Over Protective Structure (ROPS) – meets requirements of SAE-J1040 and ISO 3471; Falling Object Protective Structure (FOPS) – meets requirements of SAE-J1043 and ISO 3449, Level I

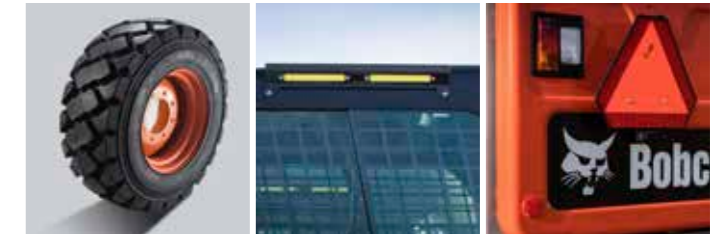
OPTIONS

OPTIONS

	S450	S510	S530	S550	S590
14-pin attachment control kit				•	•
2 Speed		•	•	std	std
200 lbs (74.4 kg) counterweight kit				•	•
Attachment Control	•	•	•	std	std
Automatic Reversing Fan	•	•	•	•	•
Automatic Ride Control	•	•	•	•	•
Backup Alarm	•	•	•	•	•
Beacon	•	•	•	•	•
Bucket positioning	•	•	•	•	•
Cloth suspension seat	•	•	•	•	•
Custom paint color	•	•	•	•	•
Deluxe cab with side windows	•	•	•		
Deluxe enclosed cab with heating	•	•	•	•	•
Deluxe enclosed cab with HVAC	•	•	•	•	•
Engine block heater kit				•	•
Engine compartment seal		•	•		
FOPS II	•	•	•	•	•
Four-point lift	•	•	•	•	•
Fresh air heater kit				•	•
Front axle counterweight	•	•	•	•	•
Front door kit				•	•
Fuel cap locking kit				•	•
Headlight guard	•	•	•	•	•
Heavy duty offset tires		•	•	•	•
High-flow		•	•	std	std
Industrial Flex Tires	•	•	•	•	•
Joystick Controls		•	•	std	std
Joystick Controls with 2 Speed	•				
LED side lights		•	•		
Manual Controls	•	•	•		
Power Bob-Tach™	•	•	•	•	•
Radio	•	•	•	•	•
Rear auxiliary hydraulic	•	•	•	•	•
Rear camera with display	•	•	•		
Rear counterweight	•	•	•		
Rear window wiper	•	•	•	•	•
Road option	•	•	•	•	•
Severe duty tires	•	•	•	•	•
Single-point lift	•	•	•	•	•
Solid flex tires	•	•	•		
Special applications front door	•	•	•	•	•
Strobe	•	•	•	•	•
Super float tires		•	•	•	•
Tail light guard	•	•	•	•	•
Versatile duty tires	•	•	•	std	std
Water tank	•	•	•		

PERSONALIZE YOUR MACHINE

Sometimes, we all want to add a specific functionality or a personal touch to the machine. Choose from a list of comprehensive options and customize your loader to your heart's content!



Severe duty tires

Led lights

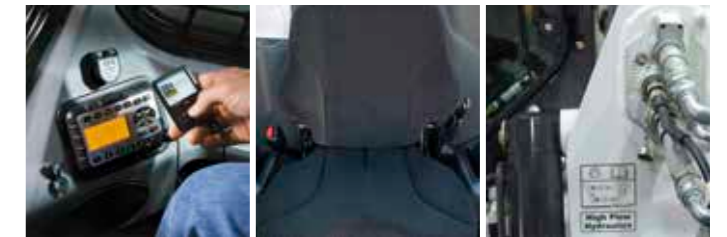
Road kit



Selectable Joystick Controls

HVAC

Rear camera



Radio

Cloth suspension seat

High-flow auxiliary hydraulics



Forestry kit

Counterweight kit

Beacon

MULTI-TOOL CARRIER

BOBCAT ATTACHMENTS

Get more versatility and efficiency with Bobcat® attachments and implements.

- The largest choice of attachments in the industry.
- Match performance to your Bobcat machine.
- Work harder with stronger components and construction.
- Rest easy with the 12-month warranty on every genuine Bobcat attachment.

Actual attachment compatibility may vary based on different machine configurations. Contact your dealer for actual attachment compatibility.



Angle Brooms



Box Blades



Breakers



Brush Saws



Combination Buckets



Concrete Mixers



Drop Hammers



Grapples, Industrial



Landplanes



Augers



Landscape Rakes



Laser Graders



Pallet Forks, Hydraulic



Root Grapples



Remote Control



Tillers



Snow Blades



Tree Transplanters



Stump Grinders



Scrapers

MULTI-TOOL CARRIER

TOP SELECTION OF ATTACHMENTS

	S450	S510	S530	S550	S590
Angle Brooms	•	•	•	•	•
Augers	•	•	•	•	•
Backhoes	•	•	•	•	•
Bale Forks	•	•	•	•	•
Box Blades		•	•	•	•
Breakers	•	•	•	•	•
Brushcat™ Rotary Cutters	•	•	•	•	•
Brush Saws	•	•	•	•	•
Combination Buckets	•	•	•	•	•
Concrete Mixers	•	•	•	•	•
Construction / Industrial Buckets	•	•	•	•	•
Diggers	•	•	•	•	•
Dozer Blades	•	•	•	•	•
Drop Hammers		•	•	•	•
Dumping Hoppers	•	•	•	•	•
Fertilizer and Grain Buckets	•	•	•	•	•
Flail Cutters	•	•	•	•	•
General Purpose (GP) Bucket	•	•	•	•	•
Graders	•	•	•	•	•
Grapples, Industrial	•	•	•	•	•
Landplanes	•	•	•	•	•
Landscape Rakes	•	•	•	•	•
Laser Equipment	•	•	•	•	•
Low Profile Buckets	•	•	•	•	•
Mixing Buckets		•	•	•	•
Mowers – non CE	•	•	•	•	•
Pallet Forks	•	•	•	•	•
Planer	•	•	•	•	•
Planer, Self Leveling		•	•	•	•
Remote Control	•	•	•	•	•
Root Grapples	•	•	•	•	•
Scarifiers	•	•	•	•	•
Scrapers	•	•	•	•	•
Skeleton Buckets	•	•	•	•	•
Snow & Light Material Buckets	•	•	•	•	•
Snow Blades, Pushers, V-blades	•	•	•	•	•
Sod Layers	•	•	•	•	•
Soil Conditioners	•	•	•	•	•
Spreaders	•	•	•	•	•
Steel Tracks		•	•	•	•
Stump Grinders		•	•	•	•
Sweepers	•	•	•	•	•
Tillers	•	•	•	•	•
Tree Transplanters		•	•	•	•
Trench Compactors		•	•	•	•
Utility Forks	•	•	•	•	•
Vibratory Rollers	•	•	•	•	•
Wood Chippers	•	•	•	•	•

SPECIFICATIONS

SPECIFICATIONS					
	S450	S510	S530	S550	S590
MACHINE RATING					
Tipping load (ISO 14397-1)	1308 kg	1703 kg	1823 kg	1852 kg	1958 kg
Rated operating capacity (ISO 14397-1)	654 kg	851 kg	911 kg	926 kg	979 kg
Pump capacity std flow (at pump RPM)	63.2 L/min		64.7 L/min		
Pump capacity high-flow (at pump RPM)	-		101.1 L/min		
System relief at quick couplers	22.4-23.1 MPa		23.8-24.5 MPa		
Travel speed	11.4 km/h		11.8 km/h		
Travel speed (high - option*)	14.8 km/h		17.3 km/h		
Lift arm path	Radial		Vertical		Radial
DIMENSIONS					
Length with standard bucket	3172 mm		3378 mm		
Width over standard bucket	1575 mm		1727 mm		
Height with operator cab	1976 mm		1972 mm		
Height to bucket hinge pin	2781 mm	2908 mm	3023 mm	2908 mm	3023 mm
Wheelbase	900 mm		1082 mm		
ENGINE					
Make / Model	Bobcat 2.4L, 97/68 EC Stage V				
Fuel	Diesel				
Cooling	Liquid				
Power at 2600 RPM (ISO 14396)	36.5 kW	41.0 kW		50.7 kW	
Torque at 1800 RPM (ISO 14396)	182.2 Nm	204.0 Nm		252 Nm	
Number of cylinders	4				
Displacement	2393 cm ³		2392 cm ³		
Fuel tank capacity	53.8 L		93.7 L		
WEIGHTS					
Operating weight**	2436 kg	2816 kg	2952 kg	2995 kg	3127 kg
Shipping weight	2221 kg	2431 kg	2581 kg	2612 kg	2751 kg
ENVIRONMENTAL					
Operator LpA (98/37 & 474-1)	86 dB(A)				
Noise level LwA (EU Directive 2000/14/EC)	98 dB(A)		101 dB(A)		
Whole body vibration (ISO 2631-1) High speed	0.78 ms ⁻²		0.86 ms ⁻²		0.9 ms ⁻²
Whole body vibration uncertainty	0.39 ms ⁻²		0.43 ms ⁻²		0.4 ms ⁻²
Hand-arm vibration (ISO 5349-1) High speed	1.29 ms ⁻²		1.31 ms ⁻²		1.6 ms ⁻²
FORCES					
Lift breakout force	1416 daN	1978 daN	1662 daN	1978 daN	
Tilt breakout force	1807 daN	2080 daN	2122 daN	2080 daN	
Push force	1866 daN	2377 daN	-	2377 daN	
CYCLE TIMES					
Raise lift arms	2.5 s		3.6 s		
Lower lift arms	2.0 s	3.6 s	2.7 s	3.6 s	
Bucket rollback	1.5 s	1.7 s	1.8 s	1.7 s	
Bucket dump	1.8 s		2.5 s		

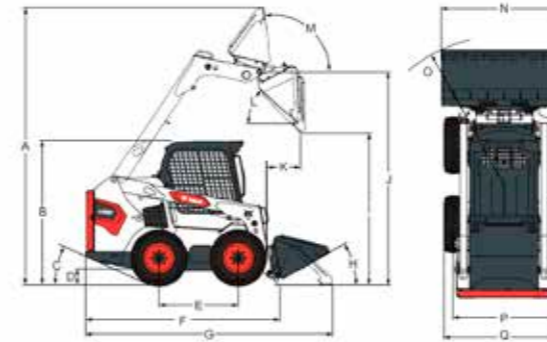
* High range standard on S550 & S590 - optional on other models

** Base machine with bucket, operator and full fuel tank

Certain specifications are based on engineering calculations and are not actual measurements. Specifications are provided for comparison purposes only and are subject to change without notice. Specifications for your individual Bobcat equipment will vary based on normal variations in design, manufacturing, operating conditions, and other factors. Pictures of Bobcat units may show other than standard equipment.

SPECIFICATIONS

DIMENSIONS



	S450	S510	S530	S550	S590
A	3558	3787	3901	3787	3901
B	1976	1972	1972	1972	1972
C	23°	24.2°	24.2°	24.2°	24.2°
D	214	185	185	185	228
E	900	1082	1082	1082	1082
F	2499	2657	2657	2657	2657
G	3172	3378	3378	3378	3378
H	26°	30°	30°	30°	30°
I	2157	2205	2319	2205	2177
J	2781	2908	3023	2908	3023
K	587	467	828	467	818
L	40°	42°	42°	42°	42°
M	91°	97°	97°	97°	97°
N	1575	1727	1727	1727	1727
N	-	1575	1575	1575	1575
N	-	1880	1880	1880	1880
O	1940	2032	2024	2032	2032
P	-	1374	1374	1374	1374
Q	1488	1643	1643	1643	1643
Q*	-	1520	1520	1520	1520

*Machine width with Heavy-duty offset tires.

Unit: mm



FINANCING OPTIONS

24, 36, OR 48 MONTH FINANCING*

Take advantage of 24, 36 or 48 month financing programs starting from **0% interest** and improve your cashflow. Ask your dealer for the financing offers available.

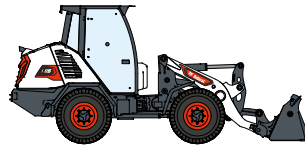
100 MACHINES / 150 ATTACHMENT FAMILIES / 1 TOUGH ANIMAL



**SKID STEER
LOADERS**



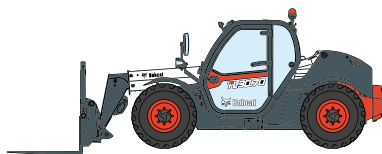
**COMPACT TRACK
LOADERS**



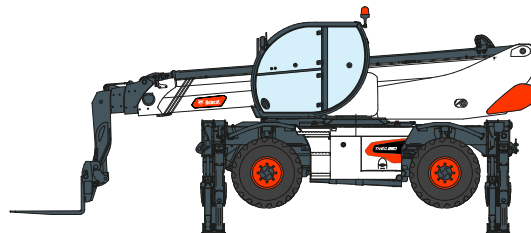
**COMPACT WHEEL
LOADERS**



**SMALL ARTICULATED
LOADERS**



TELEHANDLERS



**ROTARY TELESCOPIC
HANDLERS**



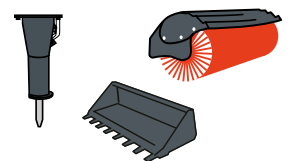
**LIGHT COMPACTION
EQUIPMENT**



**MINI TRACK
LOADER**



COMPACT EXCAVATORS



ATTACHMENTS



www.bobcat.com

Bobcat is a Doosan Company. Doosan is a global leader in construction equipment, power & water solutions, engines, and engineering proudly serving customers and communities for more than a century. | Bobcat and the Bobcat logo are registered trademarks of Bobcat Company in the United States and various other countries. ©2021 Bobcat Company. All Rights Reserved.

©2021 BOBCAT B4501682-EN (04-21)



Bobcat®

*Financing options may vary by country and dealer. Always ask your dealer about currently available financing options. Terms and conditions may apply.

Doosan Bobcat EMEA, U Kodelky 1810, 263 12 Dobříš, Czech Republic

